

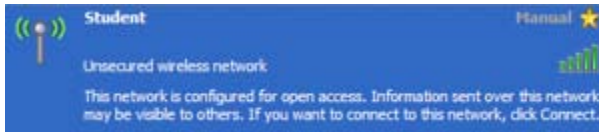
## Login to CSU Wireless Network (For Students)

The instructions listed below may be used to access the CSU Wireless Network:

1. Double click the **Wireless Network Connection** icon located on the taskbar



2. When the Wireless Network Connection window opens select **Student** from the list



3. Then select the **Connect** button in the lower right corner

4. Your device is now connecting to the wireless network



5. Upon connecting the word **connected** will appear by Admin in the wireless Network Connection window

6. Now Launch your internet browser in order to sign on to the wireless network

7. If the home page is set to blank you must visit an actual web site in order to launch the service



8. A security dialog box will appear

9. Click the **yes** button



10. The networks web authentication redirect window opens

11. Enter your CSU Network Account username followed by **@student.coppin.edu** and your password

A screenshot of a web login page. The title is "Login". Below the title, it says "Welcome to the Nortel Networks wireless network". The text continues: "Nortel Networks is pleased to provide the Wireless LAN infrastructure for your network. Please login and put your air space to work." There are two input fields: "User Name" and "Password". Below the input fields is a "Submit" button.

12. Then click the **submit** button

13. Once logged onto the CSU wireless network the Web Authentication window opens, along with the original web page you were accessing

14. Do not close the Web Authentication window or you will be disconnected from the wireless network, keep it open or minimized

15. When you are ready to log off simply click the **logout** button on the Web Authentication window



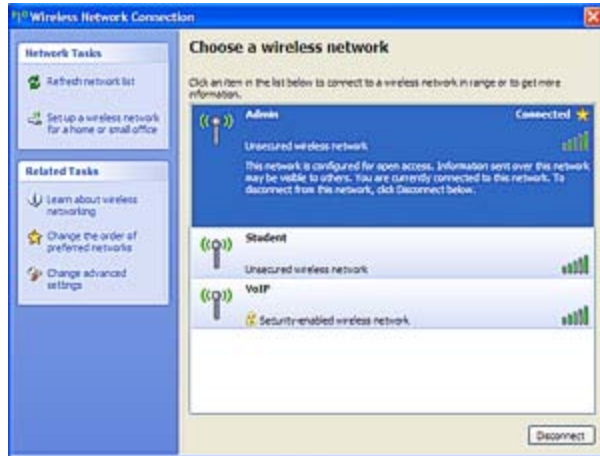
16. Click the **close** button



17. If the wireless Network Connection window is not open double click the **Wireless Network Connection** icon located on the taskbar



18. From the wireless Network Connection window select the **disconnect** button



19. Then select the **Yes** button

20. Close the Wireless Network Connection window

